

# A New View in Bloom: The Rose Garden Pavilion Opens This Summer

The New Pavilion, Featuring a Large Terrace, Will Offer Beautiful Views and Expanded Opportunities for Programs and Events



Thanks to a Founder’s gift from Hershey Entertainment & Resorts, visitors to Hershey Gardens will soon have a beautiful new place to gather, learn, and take in one of the Gardens’ most iconic views. Slated to open in mid-summer, the new Rose Garden Pavilion will provide a welcoming space for educational programs, special events - all overlooking the historic Rose Garden.

Located at the east end of the Milton & Catherine Hershey Conservatory, the pavilion replaces the seasonal tent that has long served as a gathering space for school programs and community events. The new permanent structure expands the Gardens’ ability to host activities throughout the year while providing guests with a comfortable and scenic setting surrounded by blooms.

Adjoining the beautiful Rose Garden Pavilion will be a new terrace, sponsored by PNC Bank. This terrace will feature sweeping

views of the Rose Garden. From this elevated vantage point, visitors can enjoy the vibrant colors and fragrances of one of Hershey Gardens’ most beloved and famous landscapes.

When Milton Hershey asked for “a nice garden of roses” in the 1930s, he laid the foundation for what would become Hershey Gardens. “Today, the Historic Rose Garden remains at the heart of the property, featuring thousands of roses in a wide variety of shapes, colors and fragrances,” said Amy Zeigler, senior director.

Inside the pavilion, thoughtful design elements—including custom decorative floral lighting and stained-glass transoms—help bring the beauty of the garden indoors.

As Hershey Gardens continues to grow and evolve, the Rose Garden Pavilion and PNC Terrace represent an exciting new chapter—one that honors the history of the Gardens while providing a beautiful place for guests to gather and enjoy the roses in bloom.

**HERSHEY**  
ENTERTAINMENT & RESORTS

**Grateful Acknowledgment to  
Hershey Entertainment & Resorts  
for its 2024 Founder’s Gift**

# Spring's Sweet Reward: 28,000 Tulips Return to Hershey Gardens

Hey Central Pennsylvania, we've all endured a long, cold winter – and now it's time for our reward: tulips!

This year, Hershey Gardens will showcase nearly 20 new cultivars of tulips, alongside 25 returning cultivars. The overall display will feature soft pastel tones accented with vibrant pops of bright colors and deep tones, creating a beautiful celebration of the spring season.

## Look for These New Cultivars:



**'Pretty Princess'** features lovely blush-pink petals with dark purple flames, a winning effect further enhanced by an inner glow of golden yellow. The leaves of 'Pretty Princess' are trimmed with a narrow cream band, adding sparkle to borders even before the blooms open.



**'Lasting Love'** boasts deep burgundy petals that are edged with softer red tones. The slightly recurved edges give it a sophisticated look.



**'Bella Blush'** is a graceful bloomer that will bring a warm, elegant glow to the spring display. Its gently cupped petals open a blush pink then gradually fade into a soft apricot hue toward the base.



**'Aveyron'** is a peony-flowering tulip featuring deep rose petals that shine with paler rose edges.



**'Blue Diamond'** is a late peony-flowering tulip that has beautifully formed double, purple-violet flowers.



[Click here to follow us on Facebook for bloom updates!](#)

# 10 Questions With...

Evan Kline, Manager of Administration and Visitor Experience

We recently caught up with the Manager of Administration and Visitor Experience, Evan Kline. Here's what he had to say!

## Tell us a little bit about your role at Hershey Gardens.

My role encompasses a little bit of everything. I supervise the admissions, retail, and manager on duty staff who help keep the Gardens running. Outside of that, I schedule and support groups, tours and special events. I also oversee general administrative functions like calendar management, guest correspondence and updating procedure manuals.

## Tell us a little bit about yourself.

I am the type of person who dreads this question. I wish I could say I've swam all the Great Lakes and I wrestle crocodiles in my spare time, but I'm really quite ordinary. After a long day I just like putting on my slippers and watching TV with my wife.

## What is a typical day like for you?

It is hard to summarize a "typical day" here at the Gardens when every day is a new adventure. In the late fall and winter months, I spend more time on planning events for the spring and summer. When those events roll around, I ensure they're executed properly and manage the flow of guests. Above all, I try to make everyone's experience enjoyable.



## Has there been any particular experience in your job so far that was especially memorable?

Last year's Pumpkin Palooza was the largest on record. For my team, it was non-stop running around, refilling candy, assisting guests, and helping the horticulture team park hundreds of cars. It was so much fun and the guests loved it!

## What is your background?

I went to school for broadcast journalism. After graduating, I did a lot of portrait photography and freelance video editing, which got very lonely. I decided to use my public speaking skills in the Chocolate Lab at The Hershey Story Museum, which eventually led me to Hershey Gardens last year.

## Word on the street is that you're into classic movies. Any favorites?

*Barry Lyndon*, *Breaking Away*, and *The Last Picture Show* are my snobby answers. But I have seen *Star Wars* and *The Karate Kid* about 100 times each.

## What has been the most challenging aspect of your position so far?

I would say the most challenging aspect of the position is managing the high volume of inquiries, requests and events that happen throughout the year.

## The most rewarding part?

I love for a plan to come together, especially when it leads to happy members and guests.

## How does your role impact the guest experience at Hershey Gardens?

I try to set the template behind-the-scenes for the guest experience, making sure policies and procedures are created to help with the guest experience. The staff does much of the front-facing interactions and they do a spectacular job.

## What is your favorite part of the Gardens?

The people! The staff, colleagues and volunteers make this a phenomenal place to work. In terms of a physical space, it would be the Meditation Circle.

## A Botanical Marvel: Giant Waterlily Coming To Hershey Gardens

New this year, Hershey Gardens will feature a Victoria 'Longwood Hybrid' waterlily.

"This plant is famous for its enormous leaves, which can grow 4 to 6 feet in diameter," said Alyssa Hagarman, horticulture manager. "Its leaves are supported by large, spongy veins and can hold over 150 pounds!"

The leaves also have distinctive upturned edges. Their undersides and stems are covered with sharp spines, which may serve as a defense mechanism against herbivores.

"The large flowers are night-blooming and open for two to three days," Hagarman explained. "On the first night, the flower opens white and releases a sweet pineapple



Giant waterlilies are native to the shallow, warm waters of the Amazon Basin in South America.

scent. On the second night, it reopens as a soft pink. Once the plant matures and begins to flower, it will typically continue producing blooms through the end of the season."

The 'Longwood Hybrid' waterlily was hybridized in 1960 by renowned horticulturist Patrick Nutt. It is a cross between *Victoria cruziana* and *Victoria amazonica*.

"Longwood Gardens is a leader in Victoria conservation," said Hagarman. "Each year they create hybrids and share the seeds with botanical gardens around the world, including the Missouri Botanical Garden and the Royal Botanic Gardens, Kew in London. These seeds are not available on the commercial market."

"Our waterlily is being grown from seeds generously donated by Longwood Gardens," Hagarman noted. "We are excited to add it to the Japanese Garden pond toward the end of June."

# The Butterfly Atrium: The Perfect (Local) Warm-Weather Getaway!

By Deb Wiles, Director of Horticultural Operations

With winter keeping a firm grasp outside, who doesn't dream of a tropical paradise with cozy warm temperatures, colorful flowers, lush greenery and...butterflies?! The Butterfly Atrium at Hershey Gardens is just that, and makes a wonderful escape from the winter blues. Heated to a consistent 83 degrees and home to tropical plants that bloom year-round, the real attraction is the many species of exotic butterflies enlivening the space with their aeronautical acrobatics. Flashes of electric blue, orange, yellow and red dazzle visitors at every turn.



PAPER KITE  
*Idea leuconae*

The glamorous paper kite butterfly is a favorite, with its black and white markings and nearly translucent wings. Raising the



VICEROY  
*Limenitis archippus*

“flutter factor” are the dainty *Heliconius* butterflies with their long forewings, giving them the common name longwing. Look for the postman butterfly with dark wings and red stripes, and the Doris with black wings and blue spots. No tropical forest would be complete without tigers and zebras, both *Heliconius* with coloring that match their namesakes.

Visitors can watch these and other species emerge in the chrysalis cabinet and view other fascinating creatures on the jungle deck including frogs, a tarantula, snakes and even hissing cockroaches, kept secure in their enclosure.



TIGER LONGWING  
*Heliconius hecale*



The Pearl Charaxes  
*Charaxes varanes*

## Discover These Fascinating Creatures in the Butterfly Atrium



ZEBRA LONGWING  
*Heliconius charithonius*



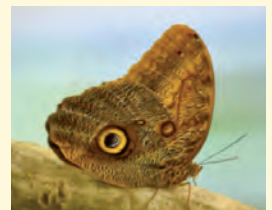
COMMON MORPHO  
*Morpho peleides*



GREAT ORANGE TIP  
*Hebomoia glaucippe*



EMERALD PEACOCK  
*Papilio palinuru*



GIANT OWL



JUNGLE NYMPH  
*Heteropteryx dilatata*



WHITE'S TREE FROG  
*Ranoidea caerulea*



CHILEAN ROSE HAIR TARANTULA  
*Grammostola rosea*



# From Seed to Garden: Preparing Seeds for a Successful Spring

By Lois Miklas, Retired Educator, The M.S. Hershey Foundation and Penn State Master Gardener

Spring is in the air, and many of us are looking longingly at seed catalogs and planning our gardens again. If you have a stash of seed packets, you may be looking at the dates and wondering whether you should plant seeds that were packed for last year or are perhaps even older. Here are a few facts about seed age and a test that you can do to see if your seeds are still viable.

## Are Outdated Seeds Still Viable?

The Pennsylvania Master Gardener Manual recommends purchasing fresh seeds each year for best results. Through trial and error, many of us have discovered that seeds purchased the previous year, or even several years ago, will still germinate. Seeds that reportedly age poorly include onion and parsley. However, many vegetables and flower seeds will still germinate after five years of storage.

## How to Store Seeds

Properly stored seeds will have the best chance of germinating after several years of storage. Store them in a dark, dry environment with low humidity. A temperature of 40°F is recommended, which would suggest that refrigeration is best. However, seeds kept in a refrigerator should be kept in laminated foil packets or in tightly sealed jars to avoid high humidity.

## How to Test for Germination Rate

The best way to decide whether to take a chance on outdated seeds or start over with new seeds is a germination test.

- Select 10 to 20 seeds and roll them up in a damp paper towel. (Rolling the towel will help keep them separate.)
- Place the towel in a plastic bag. It is a good idea to mark the date on the bag and the number of days to germination information from the seed packet, especially if you are testing more than one type of seeds.
- Place the seeds in an environment of about 70°F, perhaps a sunny windowsill or top of the refrigerator. If the seeds you are testing are early spring crops, however, such as peas, try to replicate that outdoor temperature. Sometimes the seed packet will suggest a germination temperature.



The Garden Shop features a variety of herb and flower seed packets.

- Check the seeds the germination period that is noted on the seed packet. Look for a root or the cotyledon (seed leaf) breaking the seed coat. Seeds do not all sprout at the same time, so give the unsprouted seeds a few days grace period.
- Divide the number of seeds that sprouted by the total number—this gives you the germination rate. You should look for a germination rate above 70. Even at that rate, you will need to sow the seeds more thickly. If your rate is below 70, I'd suggest buying new seeds.

## Which plants should you start from seed?



Though not a comprehensive list, here are plants you should be able to successfully direct-sow into the ground. Because they do not transplant well, you might be hard pressed to find some of these plants already started.

**Flowers to start from seed:** cosmos, marigolds, sunflowers, nasturtiums, poppies and zinnias.

**Vegetables to start from seed:** beans, beets, carrots, corn, lettuce, peas and spinach.



Some of these plants may be planted early in spring; others should wait until the ground temperature is at least 65°F. Let the seed packet be your guide for planting time and other factors, such as depth, spacing and thinning.

As the gardening season heats up, don't forget that you may contact your county Master Gardeners for advice on seed starting and many other garden questions. Find a directory of [Garden Hotlines on Penn State Extension's website](#).

# What is Beneath Your Feet? Discovering the Hidden World of Soil

By Anna Hawkins, Education and Public Programs Associate

**H**ave you ever stopped to think about what's under your feet? Every step you take on a grassy lawn, forest trail or muddy garden path is just a few centimeters away from a whole living, complex ecosystem. Soil, though often overlooked, is one of the most important ecosystems on Earth. In fact, one teaspoon of healthy soil has more microorganisms within it than there are people on earth! Without it, plants would not be able to grow, animals would not have food, and humans would not have the resources we depend on every day. Nearly everything that we eat can be traced back to soil. Beyond that, healthy soil is important so that plants can grow and supply us with the oxygen that we need to breathe. So much is dependent on what is happening right below us.

Soil is more than just dirt! It is a system made up of minerals, plant material, water, air and countless microorganisms. Its composition determines how well plants grow, how water flows through the landscape, and even how much carbon can be stored underground and kept out of the atmosphere.



## Soil Layers

One way to understand soil is to look at its layers, also called horizons. Each layer tells a story about how the soil formed and what it can support whether that be agriculture or building over it. At the top is the “O horizon”, or the “organic layer.” This is where leaves, plant debris and decomposed material accumulate, creating a nutrient-rich, dark layer that supplies microorganisms in the soil with food.

Beneath that is the “A horizon,” also known as the “topsoil.” This layer is cru-

cial for plants because it contains minerals and nutrients mixed with many microorganisms. Healthy topsoil is full of tiny bacteria, fungi, earthworms and insects!

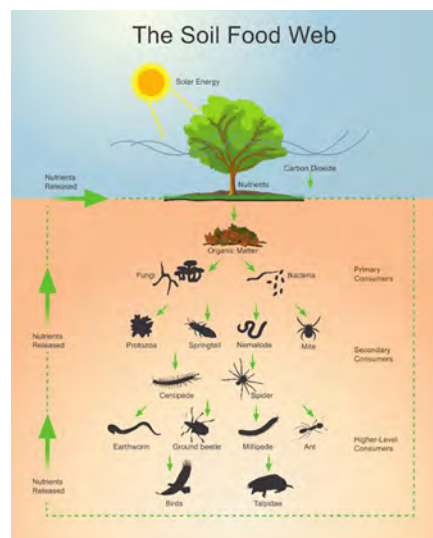
Next comes the “B horizon,” or “subsoil.” It has fewer organic materials, but often collects minerals leached down from the topsoil. Roots of larger plants sometimes reach this layer, and it plays a role in storing water.

The “C horizon” lies even deeper, consisting of weathered rock and mineral fragments slowly breaking down into soil. While it is not rich in nutrients, it determines the mineral composition and texture of the soil above it.

## Soil Food Web

Along with all of these layers in the soil that are not evident without digging into the ground, soil supports a hidden network known as the “soil food web.” This system includes microscopic bacteria, fungi, protozoa and larger soil creatures like nematodes, insects and earthworms. Each organism has a role, whether that is breaking down organic matter, cycling nutrients, or keeping other organism populations in balance.

At the base of the food web are decomposers, like bacteria and fungi, that feed on dead plant and animal material. By breaking this material down, they release nutrients such as nitrogen, phosphorus and potassium, which plants need to grow.



Next come the small creatures that feed on other consumers. Predatory nematodes, mites and beetles help regulate populations and recycle nutrients back into the soil. Even larger creatures, like earthworms, act as “ecosystem engineers,” creating tunnels that improve aeration and water infiltration.

## Soil Impacts

Plants both benefit from and participate in the soil food web. Their roots release sugars, amino acids, vitamins and enzymes into the soil, feeding fungi and bacteria in a process called “rhizodeposition.” These microbes, in turn, help plants access nutrients and protect them from harmful pathogens.

Soil is also crucial for water management, and is often referred to as a “sponge.” Healthy soil absorbs rain, filters pollutants and prevents erosion! This helps to support streams and rivers and replenish groundwater supplies.

Human activity such as chemical fertilizers, deforestation and leaving soil bare can increase soil erosion, reduce soil fertility, and harm the organisms that depend on it. Protecting soil is not just about the gardens or farms that the soil is in, it is about sustaining life for all organisms.

You can help to protect and enrich the soil in your own yard! Plant native plants, compost kitchen scraps and coffee grounds, reduce pesticide use, and avoid unnecessary disturbance of soil. Every healthy garden bed and green space contributes to a thriving soil ecosystem!

At Hershey Gardens, we take care of our soil by composting, using crop rotation in our Hoop House and Student Gardens, and mulching. From our rose beds to our Arboretum, the health of our Gardens begins underground, sustaining the flowers and wildlife above that guests can enjoy!

Soil is a hidden world that is living, dynamic, and essential. By understanding what is beneath our feet, we can appreciate the intricate web of life that supports our environment.

# Milton Hershey School Students Support Local Wildlife with Habitat Project Near Hershey Gardens

Last fall, Rebecca Lawrence, manager of education and public programs at Hershey Gardens, approached Zak Marinkov, middle division innovation lab teacher at Milton Hershey School, about partnering on a project to enhance pond habitat adjacent to Hershey Gardens' property. Zak and his wife, Erin Marinkov, agricultural club advisor and agricultural science teacher, enthusiastically accepted.

This spring, the Marinkovs taught 8th grade agricultural science and agricultural club students about conservation efforts and pond-dwelling species, with a focus on turtles and cavity-nesting birds, especially the wood duck (*Aix sponsa*).

Using plans provided by the Pennsylvania Game Commission and the Pennsylvania Fish and Boat Commission, Zak Marinkov guided students as they cut and assembled wood duck boxes and built a turtle basking platform.



“On March 18, the students, along with Hershey Gardens staff, installed two wood duck boxes,” said Lawrence. Wood ducks, often affectionately called “woodies,” choose their mates in January. “By March and April, they begin searching for nesting cavities in old, mature trees near wetlands, low streams and ponds,” Lawrence noted. “They are a common sight along the Swatara Creek. When natural tree cavities are not available, artificial boxes like those built by Catherine Hall students provide suitable nesting habitat and help their population rebound.”

Lawrence added that the nesting boxes may also be used by other cavity-nesting



Milton Hershey School 8th grade students at Catherine Hall built wood duck boxes and a turtle basking structure for installation at a pond near Hershey Gardens.

species, including mergansers, American kestrels and Eastern screech owls. Squirrels and raccoons may also take an interest in the boxes.

To further improve the pond habitat, students also built a turtle basking structure, which will be installed in May. “Using a new platform design from the Pennsylvania Fish and Boat Commission, they cut and assembled rough-cut hemlock lumber to create an 84-by-49-inch basking structure,” said Lawrence. “To anchor the structure, students also prepared concrete in 5-gallon buckets.”

“Turtles are ectothermic, or cold-blooded, meaning they cannot regulate their own body temperature and depend on their environment to warm or cool themselves,”



Lawrence explained. “Basking in the sun helps increase their body temperature, regulate hormones and maintain the health of their scutes, the plates that make up their skin and shell.”

The platform will also provide fish with an additional place to shelter from predators such as Great Blue Herons and Belted Kingfishers, which frequent the area.

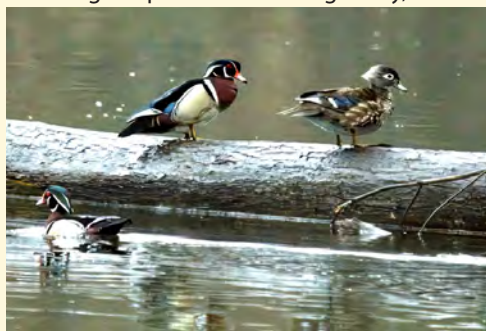
“It was a great pleasure to embark on these conservation efforts with the 8th grade classes this spring,” said Lawrence. “We thank the students for their time, effort and stewardship. Their meaningful projects, led by the Marinkovs, will have a positive impact on our local pond life.”

[Click here to learn more about building homes for wildlife.](#)

## Male and female wood ducks at Schiavoni & McNaughton Park

*Aix sponsa* by Matt Kennedy; Cornell Lab of Ornithology | Macaulay Library

A female wood duck lays about one egg per day, for a clutch of up to 15 eggs. Her seasonal mate, the male drake—known for his striking plumage—remains nearby during incubation but leaves shortly before the eggs hatch. Within a day or two of hatching, ducklings leap from the nesting cavity, sometimes from heights of up to 50 feet, and



land unharmed before making their way toward their mother's calls. She then leads them to water. The closer the nest cavity is to wetland habitat, the better the ducklings' chances of survival. If multiple cavities are available nearby, a female may also lay eggs in another duck's nest, a behavior seen in some other waterfowl species as well.

# MARK YOUR CALENDAR!

All activities below are included in admission; free for members, except where a cost is noted.

## Botanicals- Above, Below and Beyond

Now through Friday, April 24 from 9 a.m. to 5 p.m.

The art exhibit, courtesy of the Philadelphia Society of Botanical Illustrators, features 12 stunning botanical paintings which depict plants that provide benefits to Earth's environments, wildlife and human population. The title is a reprise of the PHS Flower Show theme; the exhibit features artwork from the 2026 Flower Show.



## Forest Bathing with ANFT Forest Therapy Guide Lauren Berg

Saturdays: April 18, May 16, June 13, September 19 & November 7

All sessions begin at 9:15 a.m.

\$30 for members; \$35 non-members (per session)



Forest bathing is a guided experience that invites participants to slow down, engage their senses, and cultivate a deeper connection with the natural world. Inspired by the Japanese practice of *Shinrin-Yoku*, forest bathing has been shown to reduce stress, boost immune function, and enhance overall well-being.

During the walk, your guide will offer embodiment-focused “invitations,” which participants can use as a guideline, recognizing that each individual has a unique path to follow. Invitations are followed by a time to gather, listen and share, during which all expressions are welcome. The walk will end with a light tea tasting.

Lauren Berg has experience leading diverse groups of people through a variety of outdoor educational experiences.

*The walk will include changes in grade and walking surfaces as you may go off the main paved path and onto wood carpet or grass. Shoes with good tread are recommended. As this walk will be held outdoors, please dress for weather conditions and bring a water bottle. Rain or shine. Registration is required.*

## Earth Day Celebration

Saturday, April 25 from 10 a.m. to 2 p.m..

Take part in family activities related to environmental stewardship and sustainability. For an additional purchase, enjoy ice cream treats from Sarah's Creamery beginning at 11 a.m.

You Scream, We Scream...

Sarah's Creamery

Saturday, April 25 and Sunday, April 26  
from 11 a.m. to 2 p.m.

Saturday, May 23 and Sunday May 24  
from 11 a.m. to 2 p.m.

Enjoy Sarah's Creamery festive ice cream truck, featuring flavors from the Berkey Creamery at Penn State University's Main Campus, for an additional fee.



## World Labyrinth Day

Friday, May 1 from 10 a.m. to 2 p.m.

World Labyrinth Day is traditionally celebrated the first Saturday of May. Drop in to walk our labyrinth and participate in a fun family craft in the Rock Garden.

## National Public Gardens Day

Friday, May 8 from 9 a.m. to 5 p.m.

Celebrate with us!

Click here for a half-off admission voucher, valid only for Friday, May 8, 2026.



## Mother's Day Weekend: Free Admission for Moms!

Saturday, May 9 and Sunday, May 10 from 9 a.m. to 5 p.m.



On Sunday, see a variety of rhododendrons and azaleas from the Mason Dixon Chapter of the American Rhododendron Society. Display located in the Education Center in The Children's Garden.

For an additional fee, guests can enjoy Sarah's Creamery on Saturday and Sunday from 11 a.m. to 2 p.m. and Noel's Café on Sunday only from 9 a.m. to 2 p.m.

## Susquehanna Iris Society Show

Saturday, May 16 from 9 a.m. to 5 p.m. in the Garden Cottage



Enjoy brilliantly colored irises and arrangements from members of the Susquehanna Iris Society. Knowledgeable members will be available to answer questions. Plus, enjoy Sarah's Creamery from 11 a.m. to 4 p.m. for an additional fee.

## National Red Rose Day

Saturday, June 13 from 9 a.m. to 5 p.m.

National Red Rose Day is the annual celebration of the red rose – a universal symbol of love and romance. Join us for 30-minute Historic Rose Garden tours at 10 a.m. and 2 p.m.



## Father's Day: Free Admission for Dads!

### The Gathering in the Garden: Rolls Royce Car Show (9 a.m.- 3 p.m.)

Sunday, June 21 from 9 a.m. to 6 p.m.

Bring dad to enjoy 3,000 roses in full bloom on the first day of summer! Plus, experience a stunning display of Rolls-Royce and Bentleys and learn about their history from members of the headquarters region of the Rolls-Royce Owners' Club.

Vehicles will be parked inside Hershey Gardens around Swan Lake.

For an additional fee, guests can enjoy Noel's Cafe from 9 a.m. to 2 p.m. and Sarah's Creamery from 11 a.m. to 2 p.m.



## Zoology Zone Interactive Cart

Monday through Friday, June 22 through August 14 from 11 a.m. to 12:30 p.m.



Come meet some new "friends" at the Zoology Zone Interactive Cart! The cart will be stationed in the Conservatory and will feature several small animals and arthropods, along with deceased butterfly specimens that guests can touch and feel. Staffed by Hershey Gardens Volunteers and Hershey Gardens staff. On Fridays, visitors can watch the Gardens' insectivores and herptiles as they receive a nutritious snack.



## Gretna



### Gretna Theatre Summer Family Series

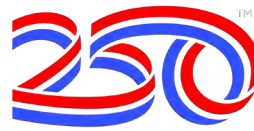
#### How I Became a Pirate

Sunday, June 28 at 1 p.m.

Performance held in The Children's Garden Amphitheater, weather permitting. In the event of inclement weather, performances will be cancelled.



## AMERICA



### America250

Saturday, July 4 from 10 a.m. to 2 p.m.

Sunday, July 5 from 10 a.m. to 2 p.m.

Celebrate our nation's semi-quincentennial and join us for family activities and unique collection

highlights. Stationed tour guides throughout the gardens will highlight the Lincoln cultivar rose, the *Franklinia alatamaha*, the American Heritage Chestnut and more! Educational activities will relate to community design, animal and plant habitats, and more in The Children's Garden. For an additional fee, enjoy ice cream treats from Sarah's Creamery beginning at 11 a.m.

### Music in the Gardens

Thursday, August 13 from 6 - 8 p.m.

*Generations Big Band*

Thursday, August 20 from 6 - 8 p.m.

*The Best of Broadway*

Thursday, August 27 from 6 - 8 p.m.

*Rhythmic Groove, featuring Rose Hudson*

Join us for three evenings of beautiful music in the Gardens from



PNC TERRACE

the new PNC Terrace! Guests are invited to bring their own beverages and snacks, as well as chairs or a blanket. The Butterfly Atrium will be closed. Regular admission rates apply; free for members. Rain or shine!



Sponsors:

Robert Ackerman | Robert & Linda Pugliese | Dr. Thomas Davis



PennState Health



## Live Feedings at the Zoology Zone Interactive Cart

Fridays: September 4, 11, 18 & 25 from 12 to 12:30 p.m.

Join us to watch the Gardens' insectivores and herptiles receive a nutritious snack!

# Marvelous Mondays

July 6, 13, 20, 27 and August 3 from 10 a.m. to 12 p.m.

Mondays are marvelous in The Children's Garden! Join us for kids' crafts led by Volunteers, and explore weekly themes. Come back each week to discover new activities and greet special guests. Additional guests may be added!

### Themes:

July 6: America 250

July 13: Paws, Claws, Scales and Tails with ZooAmerica

July 20: Agriculture with PA Friends of Ag Immersion Lab and the Lancaster County Beekeepers Society

July 27: Pollinators

August 3: Exotic Plants and Animals



## Hershey Area Art Association Show & Sale

Friday, September 4 through Sunday, September 6 from 9 a.m. to 6 p.m.

Enjoy fabulous works of art at the "Blooming Art" display in the Milton & Catherine Hershey Conservatory.

## Hershey Gardens Member Reception

Wednesday, September 30 from 4:30 to 6 p.m.

Members, look for your invitation in the mail!

## Bonsai Exhibit by Susquehanna Bonsai Club

September 23 through October 10

from 9 a.m. to 5 p.m.

Marvel at a variety of bonsai specimens from the premiere bonsai club of the Susquehanna Valley.



## Bonsai Demonstration by Susquehanna Bonsai Club

Saturday, October 3 from 10 a.m. to 2 p.m.

Join members of the Susquehanna Bonsai Club for multiple demonstrations on how to take care of bonsai specimens. In case of inclement weather,

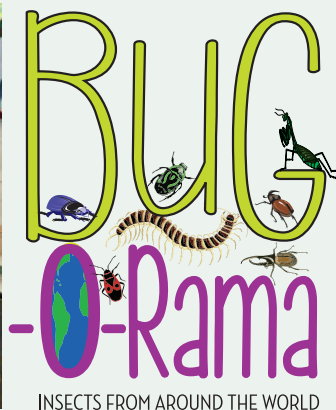
demonstration will be moved to the Conservatory.



## PA Children's Outdoor Bill of Rights Day

Friday, October 9 from 10 a.m. to 1 p.m.

Learn about the PA Children's Outdoor Bill of Rights, which promotes healthy development and environmental equity. Enjoy activities in The Children's Garden and take part in a planting activity. Plus, kids come for free! Get one free junior admission for each paying adult ticket on October 9 only.



INSECTS FROM AROUND THE WORLD

## Bug-O-Rama

Sunday, September 20 from 10 a.m. to 3 p.m.

It's the 10th anniversary of Bug-O-Rama! Participate in a variety of fun bug activities with Penn State Entomology, Ryan the Bug Man, ZooAmerica, Lancaster County Beekeepers and PA Bat Rescue, among others. Plus, enjoy Sarah's Creamery for an additional purchase. **See the full schedule of events here.**



October 17, 18, 24 and 25 from 9 a.m. to 5 p.m.

Check [HersheyGardens.org](http://HersheyGardens.org) in the coming months for more details!



# We Homeschool Families!

## Spring Homeschool Day: AQUATIC ECOSYSTEMS

Tuesday, April 14 from 9:30 a.m. to 12:30 p.m.  
For grades K – 12



Join us for an outdoor guided habitat search for aquatic life as we identify elements of successful habitats for PA native species of plants and animals. Learn about aquatic invertebrate organisms' life cycles and environmental impacts on them. In the Conservatory and Butterfly Atrium, meet our non-native frog species to learn about their adaptations and unique habitat

needs, like our Vietnamese mossy frog and bumblebee poison dart frogs.

**\$11 per student, \$13 per adult; includes admission to Hershey Gardens and the Butterfly Atrium.**  
Registration required here; closes on April 12.

## Fall Homeschool Day: Avian Migration

Tuesday, September 29 from 9:30 a.m. to 12:30 p.m.  
For grades K-12



Learn about bird species that stay year-round at the Gardens, our temporary spring and summer residents, such as the eastern wood pewee, chimney swifts, barn swallows, tree swallows and purple martins, which pass through for overnight stays.

We'll highlight our new partnership with the Pennsylvania Game Commission and the results of our first season of artificial nesting and cavity structures in the meadow.

**\$11 per student, \$13 per adult; includes admission to Hershey Gardens and the Butterfly Atrium.**  
Registration required starting August 1; closes on September 27.

### Eco-Fiction Book Club

Join us to explore works of eco-fiction, nature and environment-oriented works, which often include a human element. It is not necessary to attend all sessions - join us when you can! New participants are always welcome. We encourage you to read each month's selection prior to the meeting to fully participate in the discussion. Located in the Garden Cottage.



**Friday, April 24 from 10 to 11:30 a.m. –** *State of Wonder* by Anne Patchett and *Finding the Mother Tree* by Susanne Simard

**Friday, July 24 from 10 to 11:30 a.m. –** *Where the Rivers Merge* by Mary Alice Monroe and *Low Country: A Memoir* by J. Nicole Jones



**Friday, October 23 from 10 to 11:30 a.m. –** *Annihilation* by Jeff VanderMeer and *The Secret Life of Plants: A Fascinating Account of the Physical, Emotional, and Spiritual Relationship Between Plants and Men* by Peter Tompkins

Book selections for each month can be found at your local public library or at any major retailer.

Please contact Kaitlin Dannenberg to register: 717.508.1937 or [kadannenberg@hersheygardens.org](mailto:kadannenberg@hersheygardens.org).

## HERSHEY GARDENS 2026 HOURS OF OPERATION

### Now – May 22:

9 a.m. – 5 p.m., daily, including  
Easter Sunday

### May 23 – September 7:

9 a.m. – 6 p.m. daily

### September 8 – December 31:

9 a.m. – 5 p.m., daily with the following holiday exceptions:  
Closed on Thanksgiving and Christmas Day;  
open 9 a.m. – 3 p.m. on Christmas Eve



# 2026 SUMMER CAMPS at HERSHEY GARDENS

Our exciting, hands-on approach to science gives children the unique opportunity to conduct exciting and engaging experiments and activities. We make learning science FUN!

Full day options are \$415/week; half day options are \$240/week.  
For more information or to register for the camps, please visit [scienceexplorers.com](http://scienceexplorers.com)

## SCIENCE EXPLORERS®

### Fizz, Bang, Boom!

For ages 7 - 11

June 22 - 26

Full day 9 a.m. - 4 p.m.;

Half day 9 a.m. - 12 p.m.



What do you get when you take the physics of motion, add in some electrifying experiments, and mix it up with some chemistry? Every one has a blast! In our half day camp you'll create your own battery-powered invention, experiment with light and flight, make your own kaleidoscope and experiment with giant floating bubbles.

### Take a Dive (Two dates)

For ages 7 - 11

June 29 - July 2 (4 day; M - Th)

Full day 9 a.m. - 4 p.m.;

Half day 9 a.m. - 12 p.m.

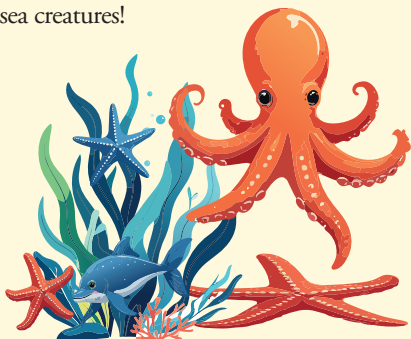
July 20 - 24

Full day 9 a.m. - 4 p.m.;

Half day 9 a.m. - 12 p.m.



Dive into the world of marine biology and oceanography! In our half day camp, you'll dissect a real shark, participate in a fisherman's challenge, examine the anatomy of a fish and learn the ancient technique of gyotaku or "fish rubbing", learn to survive at sea by making your own solar still, engage in a fascinating whale adaptation lab, get creative as you build a kelp forest and design your own submarine. Stay for the full day camp and come face-to-face with some unique sea creatures!



### Astronaut Academy (formerly Far Out Space Academy)

For ages 7 - 11

July 27 - 31

Full day 9 a.m. - 4 p.m.;

Half day 9 a.m. - 12 p.m.

3...2...1 BLAST OFF

to discovering space and flight! Half day campers will explore the stars and constellations as you take an out-of-this-world sky tour in our homemade planetarium, prepare for lift-off as you build and launch your own rocket while learning about Newton's Laws of Motion, complete a mission to Mars as you design and build your own model space station and work in engineering teams to construct space capsules that will be used to launch "eggstronauts"! Full day campers will continue to use their astronaut wits as we build air powered nanorovers, make craters and dry ice comets, and work with a robotic arm as we learn how astronauts use robots to work on satellites.



### Summer Science Mash-Up

Ages 7 - 11

August 3 - 7

Full day 9 a.m. - 4 p.m.;

Half day 9 a.m. - 12 p.m.

Join us as we transform our 2025-26 after-school club topics into an unforgettable week-long camp adventure! Each day brings a brand-new theme packed with hands-on experiments, wild discoveries, and mind-blowing fun. Learn science tricks that look like magic to amaze your friends. Join the Slime Squad for a day of stretchy, squishy, glowing creations. Get messy in the Grossology Lab as you uncover the gross but fascinating secrets of the human body. Tap into your creative side as you build a spin-art machine and mix up fizzing paint to make amazing art.



### Jr. Investigative Team

For ages 4 - 6

August 10 - 14

Half day 9 a.m. - 12 p.m.

Hey there, future Science Explorers, do we have the camp for you! Join our team of curious tiny-techs as we explore a new theme each day. Experiment with the power of magnets, investigate the life cycle of beautiful butterflies, discover how birds adapt to their environments, explore the unique properties of water, and make colorful sidewalk chalk! You are never too young to be a scientist!

## HERSHEY AREA PLAYHOUSE

### Summer Theatre Camp

July 6 - 10 and 13 - 17

9 a.m. - 12 p.m.

Final Performance: Friday, July 17 at Noon

For students 4th through 8th grade

Join us for a two-week camp and final performance!

Our 13th anniversary show is Treasure Island, written by Robert Louis Stevenson and adapted by Jennifer Feldser. Jim Hawkins is given a map which sends him and his friends on an adventurous ocean journey to find the treasure. Led by the infamous Long John Silver, a mutinous crew of pirates will stop at nothing to get to the treasure first! The camp will be complete with auditions, acting games, rehearsals, memorized lines, blocking and swashbuckling fights. We will add costumes, props and small set pieces for a polished show with 30 campers in only two weeks! Our qualified Theatre Academy teachers and counselors are looking forward to getting back to the Gardens and working with and enjoying your children.

Limited spots available, please register early. \$290 + registration fee.

Monday rehearsals are at the Playhouse, Tuesday through Friday rehearsals are at Hershey Gardens. The camp will culminate with a full production on Friday, July 17. For questions, and to be added to a possible wait list, please contact Jill at [jillpanyard@gmail.com](mailto:jillpanyard@gmail.com). Learn more and register at [HersheyAreaPlayhouse.com](http://HersheyAreaPlayhouse.com).